

RPL9 Antibody (C-term)
Affinity Purified Rabbit Polyclonal Antibody (Pab)
Catalog # AP16409b

Specification

RPL9 Antibody (C-term) - Product Information

Application	WB,E
Primary Accession	P32969
Other Accession	P17077 , P51410 , Q5IFJ7 , Q3SYR7 , NP_000652.2 , NP_001020092.1 , G1SWI6
Reactivity	Human
Predicted	Bovine, Monkey, Mouse, Rabbit, Rat
Host	Rabbit
Clonality	Polyclonal
Isotype	Rabbit IgG
Calculated MW	21863
Antigen Region	149-177

RPL9 Antibody (C-term) - Additional Information

Gene ID 6133

Other Names

60S ribosomal protein L9, RPL9

Target/Specificity

This RPL9 antibody is generated from rabbits immunized with a KLH conjugated synthetic peptide between 149-177 amino acids from the C-terminal region of human RPL9.

Dilution

WB~~1:1000

E~~Use at an assay dependent concentration.

Format

Purified polyclonal antibody supplied in PBS with 0.09% (W/V) sodium azide. This antibody is purified through a protein A column, followed by peptide affinity purification.

Storage

Maintain refrigerated at 2-8°C for up to 2 weeks. For long term storage store at -20°C in small aliquots to prevent freeze-thaw cycles.

Precautions

RPL9 Antibody (C-term) is for research use only and not for use in diagnostic or therapeutic procedures.

RPL9 Antibody (C-term) - Protein Information

Name RPL9

Function Component of the large ribosomal subunit (PubMed:[23636399](#), PubMed:[32669547](#)). The ribosome is a large ribonucleoprotein complex responsible for the synthesis of proteins in the cell (PubMed:[23636399](#), PubMed:[32669547](#)).

Cellular Location

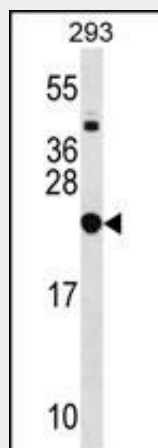
Cytoplasm.

RPL9 Antibody (C-term) - Protocols

Provided below are standard protocols that you may find useful for product applications.

- [Western Blot](#)
- [Blocking Peptides](#)
- [Dot Blot](#)
- [Immunohistochemistry](#)
- [Immunofluorescence](#)
- [Immunoprecipitation](#)
- [Flow Cytometry](#)
- [Cell Culture](#)

RPL9 Antibody (C-term) - Images



RPL9 Antibody (C-term) (Cat. #AP16409b) western blot analysis in 293 cell line lysates (35ug/lane). This demonstrates the RPL9 antibody detected the RPL9 protein (arrow).

RPL9 Antibody (C-term) - Background

Ribosomes, the organelles that catalyze protein synthesis, consist of a small 40S subunit and a large 60S subunit. Together these subunits are composed of 4 RNA species and approximately 80 structurally distinct proteins. This gene encodes a ribosomal protein that is a component of the 60S subunit. The protein belongs to the L6P family of ribosomal proteins. It is located in the cytoplasm. As is typical for genes encoding ribosomal proteins, there are multiple processed pseudogenes of this gene dispersed through the genome. Two alternatively spliced transcript variants encoding the same protein have been found for this gene. [provided by RefSeq].

RPL9 Antibody (C-term) - References

Oh, J.H., et al. Mamm. Genome 16(12):942-954(2005)
Andersen, J.S., et al. Nature 433(7021):77-83(2005)
Kapp, L.D., et al. Annu. Rev. Biochem. 73, 657-704 (2004) :
Mazumder, B., et al. Cell 115(2):187-198(2003)
Andersen, J.S., et al. Curr. Biol. 12(1):1-11(2002)